

## Integrated weed management in direct seeded rice in Trans Indo-Gangetic plains of India- A review

**Ajay Singh\***

Department of Agronomy, CCS Haryana Agricultural University, Hisar-125004 (Haryana), India

**D. P. Nandal**

Department of Agronomy, CCS Haryana Agricultural University, Hisar-125004 (Haryana), India

**S. S. Punia**

Department of Agronomy, CCS Haryana Agricultural University, Hisar-125004 (Haryana), India

**Priti Malik**

Department of Agronomy, CCS Haryana Agricultural University, Hisar-125004 (Haryana), India

\*Corresponding author. E-mail: ajayyadavhau@gmail.com

### Abstract

In the Indo-Gangetic Plains (IGP) of India, rice (*Oryza sativa* L.) is taken by conventional tilled puddled transplanted (CT-PTR) method. CT-PTR requires a lot of water (2000-2500 mm) which comes mainly from groundwater. Due to declining water table and changing climate, the sustainability of CT-PTR rice is under immense pressure. The alternative to CT-PTR could be direct seeded rice (DSR) which requires less water, labor, initial cost and energy than CT-PTR. But direct seeded rice is heavily infested with weeds which cause severe loss to the grain yield. Thus, the success of aerobic rice depends on effective and timely weed control. As a single weed control method may not be successful on a long term basis, weed problem in direct seeded rice needs to be solved by integrated approach. Integrating cultural, mechanical and chemical methods along with highly competitive cultivars with effective allelopathic properties, effective weed management on long term sustainable basis can be achieved.

**Keywords:** Aerobic rice, Allelopathy, Competitive Cultivars, Direct seeded rice, Puddled transplanted rice

### Article Info

DOI: [10.31018/jans.v10i2.1679](https://doi.org/10.31018/jans.v10i2.1679)

Received: February 24, 2018

Revised: April 25, 2018

Accepted: May 18, 2018

### How to Cite

Singh, A. *et al.* (2018). Integrated weed management in direct seeded rice in Trans Indo-Gangetic plains of India- A review. *Journal of Applied and Natural Science*, 10(2): 779 - 790

### INTRODUCTION

Rice (*Oryza sativa* L.) is the most important cereal crop of India and feeds the belly of more than 800 million Indians. It has a share of 41.39% in total food grain produced and 55% of cereals produced in the country, contributing 20-25 % to Agricultural GDP (Anonymous, 2016). In India, rice is grown on nearly 43.49 m ha with total production of 104.4 m t and productivity of 2400 kg/ha (Anonymous, 2016).

In India, the IGP cover about 20% of the total geographical area (329 Mha) and about 27% of the net cultivated area, and produce about 50% of the total food consumed in the country (Dhillon *et al.*, 2010). It is spread across five Indian states, Punjab, Haryana, Uttar Pradesh, Bihar and West Bengal. Trans Indo Gangetic Plain (TIGP) in India is spread across Punjab and Haryana. TIGP constitute a highly productive RW zone contributing about 69% of the total food output in the country (about 84% wheat and 54% rice) and this region is called the "food bowl of India." This region has played a vital role in sustaining the food security of India by contributing about 40% of wheat and 30% of rice to the central stock of India every year dur-

ing the last four decades (Hira and Khera, 2000).

In the Indian perspective, a target production of 130 MT (Million tonne) of rice has to be achieved by 2020-2021, which means 5-6% increase in total production annually, to feed ever increasing population. The possibility of increase in area in the near future is very limited mainly due to fast urbanization, utilization of productive land for non-agricultural purposes and land degradation. Therefore, the extra rice needed must come from gain in productivity. The main hindrance in achieving this target are: (1) inefficient use of inputs (fertilizer, water, labour); (2) less availability of water and labour; (3) climate change; (4) the emerging crisis of energy and rising fuel prices; (5) the rising cost of cultivation; and (6) other problems like rapid urbanization, labour migration to cities (Ladha *et al.*, 2009).

In India, mainly puddled transplanted rice is taken. In transplanted rice, first rice nursery is raised and thereafter 20-30 days old seedlings are transplanted into puddles soil. Puddling makes an impervious layer which reduces percolation loss, creates anaerobic conditions to increase availability of nutrients and suppresses weeds (Bhurer *et al.*,

2013).

But repeated puddling destroys soil aggregates, thereby decreasing permeability in sub-surface layers and forming hard-pans (Aggarwal *et al.*, 1995; Sharma and Datta, 1985; Sharma *et al.*, 2003), all of these prove detrimental to succeeding crop usually wheat in IGP (Hobbs and Gupta, 2000).

Moreover, puddling requires additional water (~200 mm) which is becoming scarce day by day and labour which becoming costlier each day. So, with increasing cost of cultivation paddy production is become less profitable to the farmers. In India per capita water availability decreased by 72.3 % between 1951 and 2005 (5831 m<sup>3</sup> and 1611 m<sup>3</sup> in 1951 and 2015 respectively) and is likely to decline by 77.8 % by 2050 (1292 m<sup>3</sup> in 2050). So scarcity of water, less availability of labour acts as driving force for direct seeding (Kumar and Ladha, 2011). All these above factors demand a major shift from conventionally tilled-puddle transplanted rice (CT-TPR) to direct seeding of rice (DSR).

Pandey and Velasco (2002) argued that transplanted is prevalent in areas where wages rates are low and water availability is enough whereas high wage rates and less availability of water favours adoption of direct seeded rice. So, aerobic rice could replace puddled transplanted rice. Direct seeded rice matures 7-11 days earlier than transplanted rice allowing timely sowing of next crop (Giri, 1998; Singh *et al.*, 2006).

Other benefits of DSR include easier planting by direct seeded machine, improvement of soil structure, higher tolerance to water deficit, less emission of methane and often higher profit in areas with an assured water supply (Datta, 1986). Both Dry and Wet-DSR have the potential to reduce the water and labour use compared with CT-TPR. Tabbal *et al.* (2002) under on-farm trials in Philippines observed on an average 67-104 mm of saving in irrigation water in Wet-DSR compared with puddled-transplanted rice when irrigation application criteria was same for both establishment methods. Other than saving water, DSR reduced total labour requirement 11%-66% depending on season, location and type of DSR compared with CT-TPR (Kumar *et al.*, 2009; Rashid *et al.*, 2009). Labour requirements for crop establishment decreased by more than 75% with direct seeding compared with transplanting (Dawe, 2005; Pandey and Velasco, 2002).

But direct seeded rice are heavily infested with weeds, so success of DSR depends on effective weed management (Chauhan and Yadav 2013; Singh *et al.*, 2006a; Rao *et al.*, 2007; Singh *et al.*, 2007). Many studies have reported the potential for DSR as a replacement for transplanted rice if weeds are controlled effectively (Singh *et al.*, 2007). Aerobic systems are subjected to much

higher weed pressure than CPTR (Rao *et al.*, 2007) in which weeds are suppressed due to prevailing anaerobic environment in flooded conditions and by 25-30 days old transplanted seedlings which have an edge over germinating weed seedlings (Moody, 1983).

So managing weeds effectively is the major challenge in DSR, as failure to manage weeds results in very low or no yield (Singh *et al.*, 2008; Moody and Mukhopadhyay, 1982). In DSR first 30-45 days after sowing is critical period and weeds must be managed effectively in this period otherwise there will be much loss in the yield. Maity and Mukherjee (2008) reported that uncontrolled weeds reduced the yield by 96% in dry-DSR and 61% in wet-DSR.

So the success of DSR depends largely on effective weed management especially the integrated approach. As a single method may not provide adequate control and for long term sustainability, integrated approach is the best option.

**Weed flora of DSR:** Direct seeded rice is infested by complex weed flora including various grasses, broadleaf and sedges. Singh *et al.* (2017) reported *Echinochloa glabrescens*, *Leptochloa chinensis*, *Cyperus* spp. *Ammania baccifera*, *Eclipta alba* as predominant weed species in direct seeded rice at Kaul (Kaithal) Haryana. Saha (2006) reported that DSR was mainly infested by sedges including *Cyperus difformis* (30.2%), *Fimbristylis miliacea* (27%) followed by BLW *Ludwigia parviflora* (17.5%) *Sphenochlea zeylancia* (15.8%) and grasses *Echinochloa colona* (9.5%).

However, Mishra and Singh (2008) reported that direct seeded rice was infested mainly by BLW including *Phyllanthus* spp. (26.5%), *Commelina communis* (17.8), *Physalis minima* (1.8%), *Alternanthera sessilis* (5.9%), *Caesulia axillaris* (1.2%), grasses *Echinochloa colona* (31.8%) and sedges *Cyperus iria* (9.9%). So the composition and species of weed vary from region to region.

**Losses caused by weeds:** The productivity of crops to a greater extent depends upon efficient resource management. Among many factors responsible for low yield in Indian agriculture, problem of weed is one of the major factors causing losses in crop yield in general and under direct seeded rice in particular. Heavy weed infestation and poor weed management contribute to poor yield in aerobic rice (Bhurer *et al.*, 2013).

Crop-weeds competition depends on a number of factors such as the weed species, type of rice culture, methods of planting and cultural practices. Rice crop suffers more if weeds compete for resources during initial crop growth period and competes for a longer period. This results in poor growth of rice plants which eventually leads to poor yield. Weeds heavily repress the growth of rice during initial 30-40 days.

The slow initial seedling establishment and growth

**Table 1.** Different type of mulches, their suppressive ability on particular weeds and increase in yield.

Type of mulch	Rate (t/ha)	Weeds	Weed suppression (%)	Increase in yield (%)	Reference
Wheat mulch	4	Grass and BLW	54	22	(Singh <i>et al.</i> , 2007)
Plastic mulch		Complex	69-77	45	(Mohtisham <i>et al.</i> , 2013)
Paper mulch		<i>Echinochloa</i> spp., <i>Schoenoplectus mucronatus</i>	61-97		(Wentao <i>et al.</i> ,2003)
Maize mulch	5	Complex	48-56	32	(Mohtisham <i>et al.</i> , 2013)
Sugarcane trash mulch	5	Complex	26-32	16	(Mohtisham <i>et al.</i> , 2013)
Alfalfa	1	<i>E.phyllopogon</i> , <i>Mono-choria vaginalis</i>	~90	81	(Xuan <i>et al.</i> , 2003)

**Table 2.** Common pre-emergence herbicides used in direct seeded rice in India.

S. No.	Name of the herbicide	Dose (kg/ha)	Time of application	References
1.	Pendimethalin	0.75-1.0	PRE	(Singh <i>et al.</i> ,2016;Singh <i>et al.</i> , 2017;Gopal <i>et al.</i> , 2010)
2.	Oxadiargyl	0.09-0.10	PRE	(Singh <i>et al.</i> , 2016; Singh <i>et al.</i> ,2017)
3.	Pyrazosulfron	0.015-0.020	PRE	(Kaur and Singh, 2015)
4.	Butachlor	1.0-1.50	PRE	(Singh <i>et al.</i> , 2016, Kaur and Singh, 2015)
5.	Penoxsulam	0.030	PRE	(Walia <i>et al.</i> , 2012)
6.	Pretilachlor	0.40-0.75	PRE	(Walia <i>et al.</i> , 2012)
7.	Thiobencarb	1.25	PRE	(Walia <i>et al.</i> , 2012)
8.	Flufenacet	0.08	PRE	(Walia <i>et al.</i> , 2012)
9.	Anilofos	0.375	PRE	(Kaur and Singh, 2015)

of young seedlings are more sensitive to weed competition in direct seeded rice and yield loss up to 57.6 % due to uncontrolled weed growth has been reported by Singh (2017).

Aerobic conditions along with alternate wetting and drying favours the germination and growth of weeds in direct seeding which causes yield loss upto 50-91% (Bhurer *et al.* , 2013; Singh and Chinnusamy, 2006).

Bhurer *et al.* (2013) claimed that weeds are supposed to be the foremost factor that causes heavy yield reduction varying from 40 to 76 % in broadcast seeded, 20 % in drill seeded and 11 to 20 % in transplanting in puddled fields. Malik *et al.* (2002) reported that uncontrolled weeds in rice can cause grain yield loss upto 89.9% as compared to weed free.

Yield loss of rice due to uncontrolled weeds was 96 % in dry DSR, 61 % in wet DSR and 40 % in the machinery-transplanted crop (Kim and Pyon, 1998). Choubey *et al.* (2001) also reported that weeds are the major biotic constraints to crop production and in direct seeded rice they reduce the yield by 40 to 100 %. Yield losses without proper weed management can reach to 70-100 % in dry seeding versus only 10-35 % for machine-transplanted rice (Lee *et al.*, 2002). The loss of yield in unweeded direct-seeded rice has been estimated to be 45-66 %, whereas it was 13% in transplanted rice (Thakur, 2006).

Reported yield losses from weeds in DSR ranged from 20 to 88 % (Rao and Moody, 1994). Yield reduction upto 50 to 60 % and sometimes complete failure of the rice crop due to heavy infesta-

tion of weeds under direct seeded upland conditions has been reported by various researchers (Singh, 1988; Singh *et al.*, 2002; Raju and Gangwar, 2004; Singh *et al.*, 2005b; Singh *et al.*, 2017).

**Methods of weed control:** Integrated weed management (IWM) is desirable for effective and sustainable weed control in Dry-DSR (Rao and Nagamani, 2007; Rao *et al.*, 2007). Tools available for IWM can be categorized broadly into (a) cultural, (b) chemical, (c) mechanical, and (d) allelopathic approach for weed control.

#### Cultural methods of weed control

**Land levelling:** Proper land preparation helps in reducing weed infestation by providing a weed free seed bed at the time of sowing. To achieve uniform crop stand the field should be levelled before crop sowing.

In Indo-Gangetic plains, a deviation of 8-15 cm in field level is observed due to traditional levelling. This results in poor crop establishment of rice due to unequal distribution of water in soil profile and inundation of newly germinating seedlings (Gopal *et al.*, 2010). Laser land levelling ensures better crop establishment (Jat *et al.*, 2009), *precise water control and increased* herbicide use efficiency (Chauhan, 2012).

**Time of sowing, seed rate and spacing:** In northern India, rice is grown during the *kharif* season before onset of monsoon. To optimize the use of monsoon rain, the optimum time for sowing DSR is about 10-15 days before onset of monsoon (Gopal *et al.*, 2010; Kamboj *et al.*, 2012; Kumar and Ladha 2011; Gopal *et al.*, 2010). A seed rate

of 20–25 kg/ha has been found optimum for basmati rice cultivars with a spacing of 20 cm (Yadav *et al.*, 2007).

High seed rates results in excessive vegetative growth thereby utilizing most of the resources before anthesis and less accumulation of dry matter after anthesis (Wells and Faw, 1978). This results in lower N content in foliage (Dingkuhn *et al.*, 1990) and results in sterility of spikelet and less grains per panicle (Kabir *et al.*, 2008).

Moreover, dense plant populations at high seed rates can create favourable conditions for diseases, e.g., sheath blight (Guzman and Nieto 1992; Mithrasena and Adikari 1986) and insects (e.g., brown plant hoppers) and make plants more prone to lodging due to weak stem (Islam *et al.*, 2008).

Lower seed rate can be used for high-tillering varieties and a little higher seed rate for medium-tillering varieties (Soo *et al.*, 1989).

Seeding depth is another important aspect which must be kept in mind. In DSR, seeding should be done with precision planters having depth control wheels. Seed depth plays an important role in germination and seedling emergence in DSR. Semi-dwarf varieties are highly sensitive to seeding depth due to their shorter mesocotyl as compared to conventional tall varieties (Blanche *et al.*, 2009).

The germination of seedling is decreased when seed is placed too deep or at shallow depth. When the seed is placed too deep, there are chances that the shoot tip will be damaged due to weak coleoptile, while if seeds are placed near surface, germination is affected by rapid drying of soil surface and high temperature near soil surface due to incoming solar radiation (Gopal *et al.*, 2010). Maximum depth upto which rice seeds can be drilled is 2.5 cm, deeper than 2.5 cm results in uneven crop establishment (Kamboj *et al.*, 2012).

**Stale seed bed technique:** Stale seedbed technique can be used to decrease weed seed bank from soil where a particular cropping system is followed year after year. This could be very useful in IGP where rice-wheat is the major cropping system. It depletes 5-10% of weed seeds present in soil.

In stale seedbed after tillage, light irrigation is applied to facilitate proper germination and emergence of weed seedlings. Single irrigation is given 15 days before sowing to maximize weed germination and after that soil moisture is maintained at optimum level. A non-selective herbicide (glyphosate or paraquat) or mechanical method is used to kill emerged weeds (Anonymous, 2017).

Stale seedbed can be very effective when weed species have low dormancy, are placed near soil surface (in Zero-tillage) and favourable environmental conditions (light, optimum temperature) are present (Chauhan, 2012).

Singh *et al.* (2009b) reported that using stale seedbed technique in direct seeded rice, weed density can be reduced by 53% over control. Chauhan and Johnson (2010) observed better weed control when stale seedbed with paraquat is used with zero-till because weed seeds placed deeper than 1cm do not emerges.

Combined use of stale seedbed along with pendimethalin gave effective control of weeds in DSR in in large-scale farmer participatory trials in India (Singh *et al.*, 2005c).

**Mulching:** Applying mulch on soil is another of controlling weeds in direct seeded rice. Besides conserving moisture mulch suppresses weeds, prevents soil erosion, add organic matter to soil, improve soil health and decrease fluctuations in diurnal temperature (Qin *et al.*, 2010).

Mulches are thought to suppress weeds by physical obstruction to germinating weed seeds, block incoming sunlight and by release of certain allelochemicals. Kumar *et al.* (2013) reported that problematic weeds of DSR such as *Echinochloa crusgalli*, *E. colona*, *Dactyloctenium aegyptium* and *Eclipta alba* were sensitive to wheat straw used as mulch.

Batish *et al.* (2007) claimed that when residue of *Tagetes minuta* L. was used as mulch it suppresses growth of *E. crus-galli* and *C. rotundus*. Hong *et al.* (2004) reported through allelopathy certain plants like with *Clerodendrum trichotomum* Thunb., *Datura stramonium* L., *Desmodium triflorum* (L.) DC. and *Melia azedarach* L. were found to suppress weeds in rice by 70-90%.

Singh *et al.* (2007) studied the effect of weed suppression ability of weeds with wheat straw 4 t/ha spread uniformly at SVBPU and T and found that during early stage (30 DAS) mulch resulted into highest reduction in total weed density (54%) which may be due to inhibitory effect of allelochemicals released by wheat on weed seed germination. Also wheat straw results in better weed control and gain in grain yield of rice. Wheat straw reduced grasses and BLW by 46% and 71% respectively, and increases grain yield of rice by 22%. This result in higher economic returns compared to control (Singh *et al.*, 2007).

Hamdi *et al.* (2001) reported that suppressive effect of wheat straw on ryegrass may be through release of leachates and organic molecules may be involved.

The straw generated in wheat crop can be best utilised by spreading over the surface. This will also solve the problem of straw management as burning straw in the IGP is another serious issue. Encouraging results with the use of straw mulch from previous crop have been reported by Talukder *et al.* (2006). Straw mulch from previous crop along with post emergence herbicides could be promising strategy to control weeds in direct seeded rice.

**Table 3.** Common post-emergence herbicides used in direct seeded rice in India

Sl. No	Name of the herbicide	Dose (kg/ha)	Time of application (DAS)	Reference
1.	Bispyribac-sodium	0.025	25-30	(Kaur and Singh, 2015; Walia <i>et al.</i> , 2008)
2.	Fenoxaprop-p-ethyl	0.06-0.075	25-30	(Upasani and Barla, 2014)
3.	Ethoxysulfuron	0.015-0.0175	25-30	(Upasani and Barla, 2014)
4.	Chlorimuron-ethyl+ met-sulfuron-methyl	0.002-0.004	25-30	(Singh <i>et al.</i> , 2010; Singh <i>et al.</i> , 2017)
5.	Acifluorfer	0.60	20-30	(Sankula <i>et al.</i> , 1997)
6.	2,4-D	1.0	30	(Angiras and Attri, 2002)

**Weed competitive cultivar:** Weed-competitive cultivars can be a low cost but promising strategy to get higher yield and economic returns (Andrew *et al.*, 2015). Varieties having good mechanical strength of coleoptile for rapid germination and higher seedling vigour to compete weeds are best suited for direct seeding (Jannink *et al.*, 2000; Zhao *et al.*, 2006).

Ranasinghe (1995) conducted field experiments to identify morphological traits which provide competitive ability to rice plants against weeds. He found that rice-barnyard grass competition varies significantly with the morphology of rice cultivar. Cultivar which attains more plant height, leaf area and higher dry matter accumulation during seedling stage and more plant height and leaf area at the time of maturity offers more competition to the weeds.

Better developed roots, high leaf area index and tillering capacity were the characters associated with weed suppressive rice cultivars (Fofana and Rauber, 2000). Perera *et al.* (1992) observed that under high crop-weed competition the root growth, root biomass and nutrient uptake is reduced in rice cultivars.

Gealy and Moldenhauer (2012) reported that weed suppressive rice cultivars have twice root biomass than those of non-suppressive types. Due to higher root biomass and root proliferation, weed suppressive cultivars competed better for resources with weeds and reduced weed loss by 44% and weed prevalence by 30% as compared to non-suppressive cultivars (Gealy and Moldenhauer, 2012).

Therefore varieties suitable for direct seeded require characters like efficient root system for better anchorage and to draw moisture from deeper soil layers during peak evaporation demands (Clark *et al.*, 2000; Pantuwan *et al.*, 2002) and a wider window of sowing time. In Punjab and Haryana region, variety PUSA-1121, PR-115, PAU-201 etc. are suited for direct seeding.

**Crop rotation:** Crop rotation is very useful in controlling weeds. There are certain crop associated weeds which can be controlled simply by changing cropping system. Changing cropping system shifts the weed flora in which some weeds disappear and new weeds emerges. Singh *et al.* (2008) studied change in composition of weeds, weed

density and weed dry weight when rice-wheat cropping sequence is changed. They found that minimum weed density was recorded in rice-wheat-green gram sequence followed by rice-wheat, rice-chickpea and rice-pea sequence.

Changing rice-wheat rotation also helps in identification of weedy rice. By rotating rice with soybean, mungbean, Kharif maize or cotton etc., weedy rice can be controlled because other herbicides and cultural practices can be used which cannot be used in rice (Singh *et al.*, 2013). Chhokar *et al.* (2008) reported that introduction of potato and pea in between rice and wheat can also improve weed control without herbicide applications.

**Brown manuring:** Brown manuring with sesbania in direct seeded rice can be a good option to control weeds, improve soil health and get higher yield. Seeds of sesbania 20 kg/ha can be drilled in between the rows of direct seeded rice 3 days after sowing of rice and sprayed with 2,4-D ethyl ester 0.50 kg/ha to produce sesbania brown manure.

Nawaz *et al.* (2017) evaluated five different rice-wheat cropping systems and found that brown manuring in direct seeded rice with sesbania decreased weed density by 41-56 % and weed biomass by 62-75% than sole direct seeded rice.

**Seed priming:** Seed priming are primarily aimed at hydration of seeds for a specific period of time to complete pre-germinative metabolic process but emergence of radicle is avoided. Priming may be done with water (hydro-priming), salt solution-NaCl (halo priming) or use of moist sand (sand matrix priming). Priming increases germination percentage, gave uniform germination, improves resistance towards water and temperature stress, and increases the yield.

Increased vigour in direct seeded Aeron 1 by different priming treatments was observed by Juraimi *et al.* (2012). They reported primed seeds produced vigorous seedling with 50% higher vigour index than unprimed seeds

Anwar *et al.* (2012) claimed that primed seeds reduce weed dry weight by 22 to 27 % mainly due to good crop establishment with vigorous seedlings and quick canopy development. They also found that primed rice seeds produce 0.4t/ha more yield over control.

**Mechanical and manual methods of weed control:** Controlling weeds through any physical activity that inhibits growth of weeds is mechanical control.

**Mowing:** Mowing is removing or cutting shoot of weeds by using sickle or mower. It is successful for controlling annual weeds while less practiced in case of perennial weeds because perennial weeds have stored food in below ground parts (rhizomes, stolones etc.) and come in several flushes. Mowing must be done before flowering or seed setting to prevent dispersal of seeds. Weed thus obtained should be buried deep or burnt to remove viability of weed seeds (Matloob *et al.*, 2015).

**Mechanical weeder:** The mechanical methods control weeds and gave yield at par with chemical control provided they are done properly. Mechanical weeding is not practiced in IGP due to labour and economic constraint.

Muthukrishnan and Purushothaman (1992) reported that HW twice at 25 and 45 DAS effectively controlled the weeds, resulting in higher grain yield over un-weeded check. Mehta *et al.* (1993) observed that HW twice, at 20 and 30 DAS, produced rice grain yield of 3.2 t/ha at par with weed free (HW four times) yielding 3.3 t/ha and higher than one HW (2.5 t/ha) and weedy (1.0 t/ha).

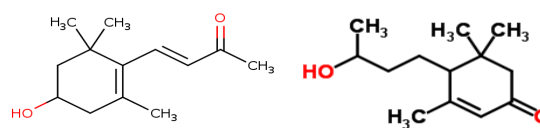
Singh *et al.* (2003) reported from Pantnagar, India that pendimethalin at 1.0 kg/ha along with farm waste as mulch (7.5 t/ha) supplemented with one HW at 45 DAS decreased weed count, weed biomass with highest weed control efficiency (91.3%) which was comparable with HW thrice at 30, 60 and 90 DAS (farmers' practice).

Manual weeding can be implemented only when weeds have reached a sufficient size to be pulled and it has an inherent opportunity cost. Manual weeding is therefore often practiced late as evident by yield loss comparisons of the effects of manual weeding at 21-30 DAS with those from the use of early post-emergence herbicides (Singh *et al.*, 2005a).

Labour scarcity, high labour cost, poor weather conditions and the presence of perennial weeds that breaks down on pulling may all lead to lower efficiency of hand weeding.

Mechanical weeding using simple implements remains a practical and economic method for many small and marginal farmers of Asia and Africa. Mechanical weeding is almost universally practised on row-seeded rice since inter row cultivation with either hand tools or animal traction equipment reduces time in weeding and minimizes crop damage.

Sarma and Gogoi (1996) reported that in rain-fed upland rice in India, a manually operated peg-type dry-land weeder which is operated manually (with a straight-line peg arrangement) has shown excellent performance across a wide range of soil types



**Fig. 1.** Allelochemicals isolated from rice (Olofsdotter *et al.*, 1995; Chung *et al.*, 1997; Dilday *et al.*, 1998; Hassan *et al.*, 1998)

with varying soil moisture levels and weed intensity providing a labour saving of ~ 57% compared with hand weeding (127 person-days/ha).

**Chemical method of weed control:** Labour unavailability, increasing labour costs, and the pressing need to raise yield and maintain profit on a progressively limited land base have been the major drivers for farmers to seek alternatives to manual weeding. Herbicides are one such alternative. Effective weed management practices are an important pre-requisite in DSR culture, with herbicide application seemingly indispensable (Azmi *et al.*, 2005). The trend for an increase in herbicide use has been reinforced by the spread of DSR (Naylor, 1994).

**Pre-emergence herbicides:** Different pre-emergence herbicides are used for controlling weeds in direct seeded rice in India (Table 2.). Among them, pendimethalin 1.0 kg/ha, oxadiargyl (0.10 kg/ha) and pyrazosulfuron (0.02 kg/ha) were found to give effective weed control (Gupta *et al.*, 2006a; Rao and Nagamani, 2007; Singh *et al.*, 2009; Gopal *et al.*, 2010; Singh *et al.*, 2017).

Pendimethalin is a selective herbicide effective against most annual grasses and several annual broad leaves weeds. It belongs to chemical class of dinitroaniline. It acts via inhibition of microtubule formation, disrupting cell division and causing microfibril disorientation, so it's a germination inhibitor. Pendimethalin controls *Echinochloa* spp. more effectively as compared to *Cyperus* spp. Pendimethalin at 0.90 kg/ha provided excellent control of weedy rice and best control of grassy weeds (Joseph *et al.*, 1990), whereas Malik *et al.* (2002) reported that pendimethalin was effective only against *Echinochloa* spp., *Cyperus iria* and *Commelina benghalensis*. It shows poor efficacy against *Leptochloa chinensis*, another predominant weed in direct seeded rice (Singh *et al.*, 2017).

Singh *et al.* (2016) evaluated three pre-emergence herbicides pendimethalin 1.0 kg/ha, butachlor 1.0 kg/ha and oxadiargyl 0.09 kg/ha and found weed density after application of these herbicides were 10-13, 15 and 16-23 plants/m<sup>2</sup> respectively compared to 51 plants/m<sup>2</sup> in weedy check at Taraori location. At Madhuban location, highest grain yield of direct seeded rice (3.43 t/ha) was obtained with pendimethalin 1.0 kg/ha PRE fb

bispyribac-sodium 0.025 kg/ha and azimsulfuron 0.0225 kg/ha POST which was comparable under weed free (3.5 t/ha).

Kaur and Singh (2015) evaluated seven pre-emergence (pendimethalin 0.75 g/ha, Butachlor 1.50 kg/ha, Thiobencarb 1.50 kg/ha, Anilofos 0.375 kg/ha, Pretilachlor 0.75 kg/ha, Oxadiargyl 0.09 kg/ha, Pyrazosulfuron-ethyl 0.015 kg/ha) herbicides for their efficacy against weeds in DSR. Application of pendimethalin 0.75 kg/ha PRE produce significantly lower weed density of *Echinochloa* spp. at 30 DAS than all other pre emergence herbicides. Similarly, the density of *Cyperus* spp. was similar in all pre-emergence herbicides. However, the weed dry matter of *Cyperus* spp. in Pyrazosulfuron-ethyl 0.015 kg/ha treated plots was at par with unweeded at 30 DAS.

**Post-emergence herbicides:** In direct seeded rice, more than one flush of weeds occurs during crop duration. Pre emergence herbicides gave effective control during early stage of crop growth and post emergence herbicides during the second flush of weeds. If weeds were not controlled properly, they can cause significant qualitative and quantitative loss in grain yield. A single herbicide cannot give effective weed control throughout crop growth period so sequential herbicide application is done. A list of common post emergence herbicides used in direct seeded rice in India is given in Table 3.

Walia *et al.* (2008) claimed that application of bispyribac-Na @ 0.025 kg/ha controlled all type of weeds in direct seeded rice and was found very effective against problematic weeds of DSR i.e. *Echinochloa* spp. and *Cyperus* spp. Also, Kaur and Singh (2015) reported that application of bispyribac-Na 0.025 kg/ha POST after six pre-emergence herbicides (butachlor, thiobencarb, anilofos, pretilachlor, oxadiargyl and pyrazosulfuron-ethyl) produced lower weed density than these six pre-emergence herbicides applied alone.

Singh *et al.* (2017) at Kaul, Kaithal (Haryana) claimed that *Leptochloa chinensis* can be controlled effectively by fenoxaprop-p-ethyl 0.067 kg/ha having weed control efficiency (WCE) of 92 % than bispyribac-Na 0.025 kg/ha with WCE of 38 % in direct seeded rice (DSR). Singh *et al.* (2004) at Pantnagar also reported good control of *L. chinensis* by fenoxaprop-p-ethyl 0.056 kg/ha while its efficacy against *Echinochloa* spp. and *Cyperus* spp. was poor than bispyribac-Na with WCE of 40 %. Singh *et al.* (2010) evaluated azimsulfuron 0.025-0.030 kg/ha at 25 DAS alone and tank mixed with chlorimuron-ethyl+ metsulfuron-methyl 0.004 kg/ha and reported that tank mixing of chlorimuron-ethyl+ metsulfuron-methyl 0.004 kg/ha does not improve the efficacy of azimsulfuron 0.025-0.030 kg/ha against grasses weeds. Azimsulfuron 0.025-0.030 kg/ha alone at 25 DAS

gave effective control of BLW (Broad leaf weeds) and sedges especially *Cyperus rotundus* but poor control of grasses.

Mishra and Singh (2008) evaluated two pre emergence herbicides i.e., pendimethalin 1.0 kg/ha and pretilachlor 0.75 kg/ha followed by 1 HW at 30 DAS or 2, 4-D (0.05 kg/ha) + fenoxaprop (0.07 kg/ha) and reported that these treatments being at par were effective against weeds and gave significantly higher grain yield (3.07, 3.25, 3.23 and 3.14 t/ha, respectively) and benefits (B:C ratio of 1.75, 1.75, 1.86 and 1.71, respectively) than weedy check (1.36 t/ha and 0.95).

Singh *et al.* (2006) studied efficacy of herbicides in direct seeded rice cultivated in FIRBS (furrow irrigated raised bed planting system) and reported that application of fenoxaprop 0.050 kg/ha + ethoxysulfuron 0.018 kg/ha at 21 DAS and pendimethalin 1.0 kg/ha PRE *fb* chlorimuron-ethyl+ metsulfuron-methyl 0.004 kg/ha at 21 DAS were effective against mixed weed flora (WCE of 90 and 84%, respectively) and economical also (Net income of 115 and 97 US \$, respectively). Mahajan *et al.* (2009) reported that application of bispyribac-Na 0.025 kg/ha and penoxsulam 0.025 kg/ha effectively controlled all the weeds in aerobic direct seeded rice (ADSR) with WCE of 85 and 67 %, respectively and grain yield were similar with conventional puddled transplanted rice (CPTR) (25.69 and 20.76 q/ha under ADSR and 30.02 and 28.58 q/ha under CPTR).

Mahajan and Timisina (2011) claimed that application of pendimethalin 1.0 kg/ha PRE *fb* bispyribac-Na 0.030 kg/ha 18 DAS or pendimethalin 1.0 kg/ha PRE *fb* bispyribac-Na 0.030 kg/ha 18 DAS + HW 45 DAS gave better weed control (WCE of 81 and 91%, respectively compared to pendimethalin 1.0 kg/ha PRE *fb*+ HW 45 DAS), higher grain yield (5.32 and 6.11 t/ha, respectively), higher water productivity and profitability in direct seeded rice.

Walia *et al.* (2008) reported that application of pendimethalin 0.75 kg/ha PRE followed by bispyribac-Na 0.25 kg/ha or azimsulfuron 0.020 kg/ha or 2,4-D 0.50 kg/ha at 30 DAS resulted in better weed control (WCE of 87, 84 and 78%, respectively) and higher grain yield of rice (5618, 4747 and 4675 kg/ha, respectively). Application of pendimethalin 0.75 kg/ha PRE *fb* bispyribac-Na 0.025 kg/ha resulted in 372 % increase in grain yield as compared to unweeded control (1191 kg/ha). Application of pendimethalin provided effective control of non-predominant paddy weeds, whereas bispyribac-Na controlled typical predominant paddy weeds including *Echinochloa colona* and all *Cyperus* spp.

Singh *et al.* (2017) reported that pendimethalin 1.0 kg/ha *fb* bispyribac-Na and chlorimuron-ethyl+ metsulfuron-methyl 0.004 kg/ha gave effective weed control (WCE of 75.4%) with higher grain yield and profitability at par with weed free (3.97

and 4.12 t/ha and 2.37 and 2.01, respectively).

**Allelopathy:** Recent studies showed that rice plants and weeds also compete through allelopathy. Olofsdotter (2001) studied allelopathic potential of 111 rice cultivars on weeds in Philippine's and reported that dry weight of weeds reduced upto 34 % after 8 weeks of seeding. The reduction in weeds dry weight is due to allelochemicals released by these rice cultivars (Olofsdotter et al., 2002). Kato-Noguchi et al. (2011) identified 3-hydroxy- $\beta$ -ionone and 9-hydroxy-4-megastigmen-3-one (Fig. 1) as main allelochemicals in Kartikshail and BR 17, two high yielding rice cultivars of Bangladesh.

Allelopathic potential of many rice cultivars like BR17 against *Echinochloa crus-galli* and *E. colonum* had already been reported in various studies (Farooq et al., 2008; Farooq et al., 2011; Jabran and Farooq, 2013). -----Several rice cultivars through release of allelochemical had been found to suppress predominant weeds of rice, such as *E. crus-galli* (Jensen et al., 2001; Seal and Pratley, 2010), *Cyperus difformis* (Seal and Pratley, 2010), *Sagittaria montevidensis* (Seal and Pratley, 2010; Seal et al., 2004).

Seal and Pratley (2010) evaluated the allelopathic multi-weed suppression of 27 different rice cultivars against five major aquatic weeds of Australia and found that cultivar Amaroo inhibited Alismataceae weeds by an average of 97%, whereas *Echinochloa crus-galli* was inhibited by 72%. A non allelopathic cultivar, Langi stimulated root growth of *E. crus-galli* by almost 20 %.

In India not much work is done to exploit the rice's allelopathic property for weed control in direct seeded rice. Cultivars with improved allelopathic potential can be developed which compete better with weeds and lowers the dependence on herbicides. So, there is wide scope to identify, develop and exploit cultivars with higher allelopathic potential in proper cropping systems.

## Conclusion

Weeds are the major biotic factors which hinder the growth and yield of direct seeded rice. Controlling weeds is pivotal for getting good grain yield of rice. Not a single weed control method is ecological viable and sustainable both ecologically as well as economically. Therefore, integrating different weed control methods on the basis of climatic conditions, edaphic factors, weed flora present and cultivars, effective weed management on a long term sustainable basis can be achieved. New weed control approach like allelopathy can be used along with other weed control methods to further reduce the losses caused by the weeds in direct seeded rice.

## REFERENCES

Aggarwal, G.C., Sindhu, A.S., Sekhlon, N.K., Sandhu, K.S. and Sur, H.S. (1995). Puddling and N manage-

ment effects on crop response in rice-wheat cropping system. *Soil and Till. Rese.* 36:129-139.

Andrew, K. S., Storkey, J. and Sparkes, D. L. (2015). A review of the potential for competitive cereal cultivars as a tool in integrated weed management. *Weed Rese.* 55: 239-248.

Angiras, N. N. and Rana, S. S. (1998). Butachlor safer-ener combinations for weed control in direct-seeded puddled rice. *Inter. Rice Rese. Notes.* 23, 46.

Anonymous (2016). Indiastat base. Retrieved from <https://www.india.stat.com>

Anonymous (2017). International Rice Research Institute, *Rice Knowledge Book*. Los Banos, Philippines. Accessed on 13.10.2017. url: <http://www.knowledgebank.irri.org/step-by-step-production/growth/weed-management/stale-seedbed-technique>.

Anwar, M. P., Juraimi, A. S., Puteh, A., Selamat, A., Rahman, M. M. and Samedani, M. (2012). Seed priming influences weed competitiveness and productivity of aerobic rice. *Acta Agricul. Scand.* 62:499-509.

Azmi, M., Chin, D. V., Vongsaraj, P. and Johnson, D. E. (2005). Emerging issues in weed management of direct-seeded rice in Malaysia, Vietnam, and Thailand. In "*Rice Is Life: Scientific Perspectives for the 21st Century*" (K. Toriyama, K. L. Heong, and B. Hardy, Eds.), pp. 196-198. International Rice Research Institute, Los Banos, Philippines, and Japan International Research Center for Agricultural Sciences, Tsukuba, Japan.

Batish, D. R., Arora, K., Singh, H. P., Kohli, R. K. (2007). Potential utilization of dried powder of *Tagetes minuta* as a natural herbicide for managing rice weeds. *Crop Prot.* 26: 566-571.

Bhurer, K.P., Yadav, D.N., Ladha, J.K., Thapa, R.B. and Pandey, K.R. (2013). Efficacy of various herbicides to control weeds in dry direct seeded rice (*Oryza sativa* L.). *Global Journal of biology, agriculture and health sciences.* 2(4):205-212.

Blanche, B., Harrell, D. and Saichuk, J. (2009). General Agronomic Guidelines. In "*Louisiana rice production handbook 2009*" (J. Saichuk, ed.), pp 3-15, Pub. 2321 (3M) 6/09 Rev.

Chauhan, B. S. and Johnson, D. E. (2010). The role of seed ecology in improving weed management strategies in the tropics. *Advan. in Agron.* 105: 221-262.

Chauhan, B. S. and Yadav, A. (2013). Weed management approaches for direct seeded rice in India: a review. *Ind. J. Weed Sci.* 45 (1):1-6.

Chauhan, B.S. (2012). Weed ecology and weed management strategies for dry-seeded rice in Asia. *Weed Technol.* 26:1-13.

Chhokar, R.S., Sharma, R.K., Singh, R.K. and Gill, S.C. (2008). Herbicide resistance in little seed canary grass (*Phalaris minor*) and its management. In: *Proceedings of the 14<sup>th</sup> Australian Agronomy Conference*, Adelaide, South Australia, 106p.

Choubey, N.K., Kolhe, S.S. and Tripathi, R.S. (2001). Relative performance of cyhalofop-butyl for weed control in direct-seeded rice. *Ind. J. Weed Sci.* 33 (3&4): 132-135.

Chung, I.M., Kim, K.H., Ahn, J.K and Ju, H.J. (1997). Allelopathic potential evaluation of rice cultivars on *Echinochloa crus-galli*. *Korean J. Weed Sci.* 17:52-58

Clark, L. J., Aphale, S. L. and Barraclough, P. B. (2000). Screening the ability of rice roots to overcome the mechanical impedance of wax layers: Importance of test conditions and measurement criteria. *Plant and*



- Soil. 219:187–196.
- Datta, D. (1986). Technology development and the spread of direct seeded flooded rice in South-East Asia. *Experi. Agri.* 22(4): 417-426.
- Dawe, D. (2005). Increasing water productivity in rice-based systems in Asia-Past trends, current problems, and future prospects. *Plant Prod. Sci.* 8(3): 221-230.
- Dhillon, B. S., Kataria, P. and Dhillon, P. K. (2010). National food security vis-à-vis sustainability of agriculture in high crop productivity regions. *Current Sci.* 98:33-36.
- Dilday, R.H., Yan, W.G., Moldenhauer, K.A.K. and Gra-vois, K.A. (1998). Allelopathic activity in rice for controlling major aquatic weeds. In: Olofsdotter M (ed.) Allelopathy in rice. International Rice Research Institute, Manila, pp 7–26.
- Dingkuhn, M., Schnie, H. F., De Datta, S. K., Wijangco, E. and Doeffling, K. (1990). Diurnal and developmental changes in canopy gas exchange in relation to growth in transplanted and direct seeded flooded rice. *Aust. J. Plant Physio.* 17:119–134.
- Farooq, M., Jabran, K., Cheema, Z.A., Wahid, A. and Siddique, K. H. M. (2011). The role of allelopathy in agricultural pest management. *Pest Manag. Sci.* 67: 493-506.
- Farooq, M., Jabran, K., Rehman, H. and Hussain, M. (2008). Allelopathic effects of rice on seedling development in wheat, oat, barley and berseem. *Allelo. J.* 22: 385-390.
- Fofana, B. and Rauber, R. (2000). Weed suppression ability of upland rice under low input conditions in West Africa. *Weed Rese.* 40:271-280.
- Gealy, D.R. and Moldenhauer, K.A. (2012). Use of <sup>13</sup>C isotope discrimination analysis to quantify distribution of barnyardgrass and rice roots in a four-year study of weed-suppressive rice. *Weed Sci.* 60:133-142.
- Giri, G.S. (1998). Effect of rice and wheat establishment techniques on wheat grain yield. In Hobbs PR, Bhandri, Raj, editors. *Proceedings of rice-wheat research project workshop*, India. pp 65-68.
- Gopal, R., Jat, R.K., Malik, R.K., Kumar, V., Alam, M.M., Jat, M.L., Mazid, M.A., Saharawat, Y.S., McDonald, A. and Gupta, R. (2010). Direct Dry Seeded Rice Production Technology and Weed Management in Rice Based Systems. *Technical Bulletin*. International Maize and Wheat Improvement Center, New Delhi, India, p. 28.
- Gupta, R. K, Ladha, J. K, Singh, S., Singh, R., Jat, M. L., Saharawat, Y., Singh, V. P., Singh, S. S., Singh, G., Sah, G., Gathala, M. and Sharma, R. K. (2006). Production Technology for Direct Seeded Rice. Technical Bulletin Series 8. In "*Rice–Wheat Consortium for the Indo-Gangetic Plains*, New Delhi, India," 14pp.
- Guzman Garcia, P. and Nieto Illidge, L. (1992). New densities and fertilization to decrease *Rhizoctonia solani*. *Rice.* 41, 10-14.
- Hamdi, B.A., Inderjit, Olofsdotter, M. and Streibig, J.C. (2001). Laboratory bioassay of phytotoxicity. *Agron. J.* 93:43-48.
- Hassan, S.M., Aidy, I.R., Bastawisi, A.O. and Draz, A.E. (1998). Weed management using allelopathic rice varieties in Egypt. In: Olofsdotter M (ed) Allelopathy in rice. International Rice Research Institute, Manila, pp 27–37.
- Hira, G. S. and Khera, K. L. (2000). Water resource management in Punjab under rice-wheat production system. Ludhiana, Punjab, India: Department of Soils, Punjab Agricultural University. *Research Bulletin* No. 2/2000.
- Hobbs, P.R. and Gupta, R.K. (2000). Sustainable resource management in intensively cultivated irrigated rice-wheat cropping systems of the Indo-Gangetic Plains of South Asia: Strategies and options. In "International Conference on Managing Natural Resources for Sustainable Production in 21st Century", 14-18 February 2000, New Delhi, India, Pp. 584-592.
- Hong, N., Xuan, T., Tsuzuki, E., Terao, H., Matsuo, M. and Khanh, T. (2004). Weed control of four higher plant species in paddy rice fields in Southeast Asia. *J Agron. Crop Sci.* 190:59-64.  
<http://a-c-s.cofex.com/crops/2009am/webprogram/paper53386.html>.
- Islam, M. F., Sarkar, M. A. R., Islam, M. S., Parveen, S. and Hossain, M. S. (2008). Effects of crop establishment methods on root and shoot growth, lodging behavior of Aus rice. *Inter. J. Biol. Rese.* 5:60–64.
- Jabran, K. and Farooq, M. (2013). Implications of potential allelopathic crops in agricultural systems. In: Cheema, Z.A., Farooq, M., Wahid, A. (Eds.), *Allelopathy, Current Trends and Future Applications*. Springer Berlin, Heidelberg, pp. 349-385
- Jannink, J. L., Orf, J. H., Jordan, N. R. and Shaw, R. G. (2000). Index selection for weed-suppressive ability in soybean. *Crop Sci.* 40:1087–1094.
- Jat, M.L., Gathala, M.K., Ladha, J.K., Saharawat, Y.S., Jat, A.S., Vipin, K., Sharma, S.K., Kumar, V., and Gupta, R. K. (2009). Evaluation of precision land leveling and double zero-till systems in the rice-wheat rotation: Water use, productivity, profitability and soil physical properties. *Soil Till. Rese.* 105: 112–121.
- Jensen, L.B., Courtois, B., Shen, L., Li, Z., Olofsdotter, M. and Mauleon, R.P. (2001). Locating genes controlling allelopathic effects against barnyardgrass in upland rice. *Agron. J.* 93:21-26.
- Joseph, K., Tomy, P.J. and Nair, N.R. (1990). Relative efficacy of different herbicides for control of weeds in dry seeded low land rice. *Oryza.* 27(2): 199-201.
- Juraimi, A. S., Anwar, M. P., Selamat, A., Puteh, A. and Man, A. 2012. The influence of seed priming on weed suppression in aerobic rice. *Pak. J. Weed Sci. Rese.* 18: 257-264.
- Kabir, M. H., Saha, A., Mollah, I. U., Kabir, M. S. and Rahman, F. (2008). Effect of crop establishment methods and weed management practices on the productivity of boro rice in lowland ecosystem. *Inter. J. Bio. Rese.* 5:42–51.
- Kamboj, B. R, Kumar, A., Bishnoi, D. K., Singla, K., Kumar, V., Jat, M. L., Chaudhary, N., Jat, H. S., Gosain, D. K., Khippal, A., Garg, R., Lathwal, O. P., Goyal, S. P., Goyal, N. K., Yadav, A., Malik, D. S., Mishra, A. and Bhatia, R. (2012). Direct Seeded Rice Technology in Western Indo-Gangetic Plains of India: CSISA Experiences. *CSISA, IRRI and CIMMYT* 16 pp
- Kato-Noguchi, H., Salam, M. A. and Suenaga, K. (2011). Isolation and identification of potent allelopathic substances in a traditional Bangladeshi rice cultivar Kartikshail. *Plant. Prod. Sci.*14(2): 128-134.
- Kaur, S. and Singh, S. (2015). Bio-efficacy of different herbicides for weed control in direct-seeded rice. *Ind. J. Weed Sci.* 47(2):106-109.
- Kim, H.H. and Pyon, J.Y. (1998). Weed occurrence and yield loss due to weeds in different direct seeded rice paddy fields. *Kor. J. Weed Sci.* 18(1): 12-19.
- Kumar, V. and Ladha, J. K. (2011). Direct seeding of

- rice: recent developments and future research needs. *Advan. Agron.* 111: 297-413.
- Kumar, V., Ladha, J.K. and Gathala, M.K. (2009). Direct drill-seeded rice: A need of the day. In "Annual Meeting of Agronomy Society of America, Pittsburgh, November 1-5, 2009"
- Kumar, V., Singh, S., Chhokar, R.S., Malik, R.K., Brainard, D.C. and Ladha, J.K. (2013). Weed management strategies to reduce herbicide use in zero-till rice-wheat cropping systems of the Indo-Gangetic Plains. *Weed Tech.* 27: 241-254.
- Ladha, J.K., Kumar, V., Alam, M.M., Sharma, S., Gathala, M., Chandra, P., Saharawat, Y.S. and Balasubramanian, V. (2009). Integrating crop and resource management technologies for enhanced productivity, profitability, and sustainability of the rice-wheat system in South Asia. in "Integrated Crop and Resource Management in the Rice-Wheat System of South Asia". (J. K. Ladha, Y. Singh, O. Erenstein, and B. Hardy, Eds.), pp. 69-108. International Rice Research Institute, Los Banos, Philippines.
- Lee, M.H., Kim, J.K., Kim, S.S. and Park, S.T. (2002). Status of dry-seeding technologies for rice in Korea. In: Pandey et al. (eds.) Direct Seeding: Research and Strategies and Opportunities. *Proceedings of the International Workshop on Direct Seeding in Asian Rice Systems: Strategic Research Issues and Opportunities*, 25-28 Jan., 2000, Bangkok, Thailand. IRRI. pp. 161-176.
- Mahajan, G. and Timsina, J. (2011). Effect of nitrogen rates and weed control methods on weeds abundance and yield of direct-seeded rice. *Arch. Agro. Soil Sci.* 57(3): 239-250.
- Mahajan, G., Chauhan, B.S. and Johnson, D.E. (2009). Weed management in aerobic rice in north western Indo-Gangetic plains. *J. Crop Impro.* 23(4): 366-382.
- Maity, S.K. and Mukherjee, P.K. (2008). Integrated weed management in dry direct-seeded rice (*Oryza sativa* L.). *Ind. J. Agro.* 53(2): 116-120.
- Malik, M., Singh, R., Singh, G., Singh, R.K. and Yadav, S.K. (2002). Evaluation of dithiopyr for control of weeds in direct-seeded rice. *Ind. J. Weed Sci.* 34 (3&4): 287-289.
- Matloob, A., Khaliq, A. and Chauhan, B. S. (2015). Weeds of direct-seeded rice in Asia: problems and opportunities. *Advan. Agro.* 130: 291-336.
- Mehta, R.K., Singh, G. and Singh, O.P. (1993). Weed management in rainfed lowland rice. *Ind. J. Weed Sci.* 25(2): 99-101.
- Mishra, J.S. and Singh, V.P. (2008). Integrated weed management in dry-seeded irrigated rice (*Oryza sativa* L.). *Ind. J. Agro.* 53(4): 299-305.
- Mithrasena, Y. J. P. K. and Adikari, W. P. (1986). Effect of density on sheath blight (ShB) incidence. *International Rice Research Notes.* 11, 20-21.
- Mohtisham, A., Ahmad, R., Ahmad, Z. and Aslam, M.R. (2013). Effect of different mulches techniques on weed infestation in aerobic rice (*Oryza sativa* L.). *American-Eurasian Journal of Agriculture and Environmental Science.* 13:153-157.
- Moody, K. (1983). The status of weed control in Asia. *FAO. Plant Protection Bulletin.* 30: 119-120.
- Moody, K. and Mukhopadhyay, K. (1982). Weed control in dry seeded rice-problems, present status, research direction. In: *Rice Research Strategies For The Future*. International Rice Research Institute, Manila, Philippines. pp 147-158.
- Muthukrishnan, P. and Purushothaman, S. (1992). Effect of irrigation regime, weed control and biofertilizers on growth and yield of rice. *Ind. J. Weed Sci.* 24(3&4): 26-29.
- Nawaz, A., Farooq, M., Lal, R., Rehman, A., Hussain, T. and Nadeem, A. (2017). Influence of sesbania brown manuring and rice residue mulch on soil health, weeds and system productivity of conservation rice-wheat systems. *Land Degra. & Devel.* 28:1078-1090.
- Naylor, R. (1994). Herbicide use in Asian rice production. *World Devel.* 22: 55-70.
- Olofsdotter, M. (2001). Rice- a step toward to use allelopathy. *Agron. J.* 93(1): 3-8.
- Olofsdotter, M., Jensen, L. and Courtois, B. (2002). Improving crop competitive ability using allelopathy-an example from rice. *Plant Breed.* 121: 1-9.
- Olofsdotter, M., Navarez, D. and Moody, K. (1995). Allelopathic potential in rice (*Oryza sativa* L.). *Ann. Appl. Biol.* 127:543-560.
- Pandey, S. and Velasco, L. (2002). Economics of direct-seeding in Asia: Patterns of adoption and research priorities. In, "Rice is life: Scientific Perspective for the 21<sup>st</sup> Century". Toriyama, K., Heong, K. L., Hardy, B., editors. Los Banos Philippines: International Rice Research Institute, and Tsukuba (Japan): Japan International Rice Research Center for Agricultural Sciences. pp.3-4.
- Pantuwan, G., Fukai, S., Cooper, M., Rajatasereekul, S. and O'Toole, J. C. (2002). Yield response of rice (*Oryza sativa* L.) genotypes to different types of drought under rainfed lowlands. Plant factors contributing to drought resistance. *Field Crops Rese.* 73:181-200
- Perera, K., Ayres, P. and Gunasena, H. (1992). Root growth and the relative importance of root and shoot competition in interactions between rice (*Oryza sativa* L.) and *Echinochloa crus-galli*. *Weed Rese.* 32:67-76.
- Qin, J., Hu, F., Li, D., Li, H., Lu, J. and Yu, R. (2010). The effect of mulching, tillage and rotation on yield in non-flooded compared with flooded rice production. *J. Agro. and Crop Sci.* 196:397-406.
- Raju, R.A. and Gangwar, B. (2004). Bioefficacy of new promising herbicides on weed management in direct sown puddle rice. Extended summaries vol. 2, *International symposium on rice* held at Hyderabad (A.P.), India, Oct. 4-6, 2004. pp. 340.
- Ranasinghe, L. L. (1995). *Enhancement of the weed competitive ability of rice (Oryza sativa L.) cultivars*. Ph. D. thesis.
- Rao, A.N. and Moody, K. (1994). Ecology and management of weeds in farmers' direct seeded rice (*Oryza sativa* L.) fields. *Consultancy report of work done from 1<sup>st</sup> July to 31<sup>st</sup> December, 1994*. Los Banos (Philippines): IRRI. pp. 81.
- Rao, A.N. and Nagamani, A. (2007). Available technologies and future research challenges for managing weeds in dry-seeded rice in India. In: "Proceeding of the 21<sup>st</sup> Asian Pacific Weed Society Conference." from 2 to 6 October 2007, Colombo, Sri Lanka, pp. 391-491.
- Rao, A.N., Johnson, D.E., Shivprasad, B., Ladha, J.K. and Mortimer, A.M. (2007). Weed management in direct-seeded rice. *Advan. Agro.* 93: 153-255.
- Rashid, M.H., Alam, M.M., Khan, M.A.H. and Ladha, J.K. (2009). Productivity and resource use of direct (drum) seeded and transplanted rice in puddle soils in rice-rice and rice-wheat ecosystem. *Field Crops Rese.*

- 113: 274-281
- Saha, S. (2006). Efficacy of herbicides in wet direct-sown summer rice. *Ind. J. Weed Sci.* 38(1&2): 45-48.
- Sankula, S., Braverman, M. P. and Linscombe, S. D. (1997). Glufosinate-resistant, BAR- transformed rice (*Oryza sativa*) and red rice (*Oryza sativa*) response to glufosinate and in mixtures. *Weed Tech.* 11, 662-666.
- Sarma, A. and Gogoi, A. K. (1996). Performance of different weeders in rainfed upland rice (*Oryza sativa* L.). *Ind. J. Weed Sci.* 33: 178-182.
- Seal, A. and Pratley, J. (2010). The specificity of allelopathy in rice (*Oryza sativa*). *Weed Rese.* 50, 303-311.
- Seal, A.N., Pratley, J.E., Haig, T., Lewin and L.G. (2004). Screening rice varieties for allelopathic potential against arrowhead (*Sagittaria montevidensis*), an aquatic weed infesting Australian Riverina rice crops. *Crop Pasture Sci.* 55:673-680.
- Sharma, P.K. and De Datta, S.K. (1985). Effect of puddling on soil physical properties and processes. In "Soil Physics and Rice", pp. 217-234. International Rice Research Institute, Los Banos, Philippines.
- Sharma, P.K., Ladha, J.K. and Bhushan, L. (2003). Soil physical effects of puddling in rice-wheat cropping systems. In "Improving the productivity and sustainability of rice-wheat systems: Issues and Impacts" (J. K. Ladha, J. E. Hill, J. M. Duxbury, R. K. Gupta, and R. J. Buresh, Eds.), pp. 97-113. ASA, CSSA, SSSA, Madison, WI, ASA Special Publication 65.
- Singh, A., Kaur, R., Kang, J. S. and Singh, G. (2012). Weed dynamics in rice-wheat cropping system. *Glob-al J. Bio., Agri. Health Sci.* 1(1): 7-16.
- Singh, A., Nandal, D. P. and Punia, S. S. (2017). Performance of sequential herbicides to control weeds in direct seeded rice. *J. Applied Natural Sci.* 9(3):1324-1328.
- Singh, A.K. and Chinnusamy, V. (2006). Aerobic rice-Prospects for enhancing water productivity. *Ind. Farm.* 56(7): 58-61.
- Singh, B. (1988). Effect of weed control methods on performance of rice varieties under upland rainfed conditions of Nagaland. *Ind. J. Weed Sci.* 20(2): 51-54.
- Singh, G., Singh, R.G., Singh, O.P., Kumar, T., Mehta, R.K., Kumar, V. and Singh, R.P. (2005a). Effect of weed-management practices on direct-seeded rice under puddle lowlands. *Ind. J. Agron.* 50(2): 35-37.
- Singh, G., Singh, V.P., Singh, Y., Singh, K.M., Mortimer, M., Johnson, D.E. and White, J. L. (2003). Efficacy of herbicides alone and in combinations in direct seeded rice. *Biennial Conference ISWS*, March 12-14, G.B. P.U.A.&T., Pantnagar. pp. 03
- Singh, K., Kumar, V., Saharawat, Y. S., Gathala, M. and Ladha, J. K. (2013). Weedy rice: An emerging threat for direct seeded rice production systems in India. *J. Rice Rese.* 1:106.
- Singh, R. G., Singh, S., Singh, V. and Gupta, R. K. (2010). Efficacy of azimsulfuron applied alone and tank mixed with metsulfuron+ chlorimuron (Almix) in dry direct seeded rice. *Ind. J. Weed Sci.* 42(3&4):168-172.
- Singh, S., Bhushan, L., Ladha, J. K., Gupta, R. K., Rao, A. N., and Sivaprasad, B. (2006). Weed management in dry-seeded rice (*Oryza sativa*) cultivated in the furrow-irrigated raised-bed planting system. *Crop Prot.* 25, 487-495.
- Singh, S., Bhushan, L., Ladha, J.K., Gupta, R.K., Rao, A.N. and Shivprasad, B. (2007). Evaluation of mulching, Inter-cropping with *Sesbania* and herbicide use for weed management in dry-seeded rice (*Oryza sativa* L.). *Crop Prot.* 26: 518-524.
- Singh, S., Bhushan, L., Ladha, J.K., Gupta, R.K., Rao, A.N. and Shivprasad, B. (2008). Weed management in aerobic rice systems under varying establishment methods. *Crop Prot.* 27(3-5): 660-671.
- Singh, S., Chhokar, R.S., Gopal, R., Ladha, J.K., Kumar, V. and Singh, M. (2009). Integrated weed management : A key to success for direct-seeded rice in the Indo-Gangetic plains. In "Integrated Crop and Resource Management in the Rice-Wheat System of South Asia" (J. K. Ladha, Y. Singh, O. Erenstein, and B. Hardy, Eds.), pp. 261-278. International Rice Research institute, Los Banos, Philippines.
- Singh, S., Singh, G., Singh, V.P. and Singh, A.P. (2005b). Effect of establishment methods and weed management practices on weeds and rice in rice-wheat cropping system. *Ind. J. Weed Sci.* 37(1&2): 51-57.
- Singh, V., Jat, M. L., Ganie, Z. A., Chauhan, B. S. and Gupta, R. K. (2016). Herbicide options for effective weed management in dry direct seeded rice under scented rice-wheat rotation of western Indo Gangetic Plains. *Crop Prot.* 81:168-176.
- Singh, V.P., Singh, G., Singh, S.P., Kumar, A., Singh, Y., Johnson, D.E. and Mortimer, M. (2005c). Effect of rice wheat establishment methods and weed management in irrigated rice-wheat production system. In: *Workshop on "Direct seeded rice in the rice-wheat system of the Indo-Gangetic Plains"*, 1-2 feb. 2005, Pantnagar, Uttaranchal, India, pp. 12.
- Singh, Y., Singh, G., Singh, V.P., Singh, R.K., Singh, P., Srivastava, R.S.I. and Saxena, A. (2002). Effect of different establishment methods on rice-wheat and the implication of weed management in Indo-Gangetic Plains. *Proceedings of International Workshop on Herbicide resistance management and zero-tillage in rice-wheat system*, Hisar, India, March 4-6, 2002. pp. 182-186.
- Soo, L. K., Subinon, B. J. and Thong, O. S. (1989). Cultural practices and paddy planting in the TrusanSapi Paddy Project Proceeding *In-house Seminar on Paddy*, Department of Agriculture, Kuala Lumpur, Malaysia.
- Tabbal, D.P., Bouman, B.A.M., Bhuiyan, S.L., Sibayan, E.B. and Sattar, M.A. (2002). On-farm strategies for reducing water input in irrigated rice: Case studies in the Philippines. *Agri. Water Manag.* 56(2): 93-112.
- Thakur, T.C. (2006). Rice engineering aspects. *Ind. Far.* 56(7): 53-57.
- Talukder, A., Meisner, C., Baksh, M., Waddington, S. (2006). Wheat-maize-rice cropping on permanent raised beds in Bangladesh. In: Humphreys, E., Roth, C.H. (Eds.), *Permanent Beds and Rice Residue Management for Rice-wheat Systems in the Indo-Gangetic plains*. ACIAR Workshop Proceedings No. 127, ACIAR, Canberra, Australia, pp. 124-132.
- Upasani, R. R. and Barla, S. (2014). Weed control methods in direct seeded rice under medium land condition. *J. Crop Weed.* 10(2):445-450.
- Walia, U.S., Bhullar, M.S., Shelly, N. and Walia, S.S. (2008). Control of complex weed flora of dry-seeded rice (*Oryza sativa*) with pre- and post-emergence herbicides. *Ind. J. Weed Sci.* 40, 161-164.
- Walia, U.S., Walia, S.S., Amandeep, S.S. and Shelly, N.

- (2012). Bioefficacy of pre-and post-emergence herbicides in direct-seeded rice in Central Punjab. *Ind. J. Weed Sci.* 44: 30-33.
- Wells, B. R. and Faw, W. F. (1978). Short-statured rice response to seeding and N rates. *Agron. J.* 70:477-480.
- Wentao, R., Mingjin, X., Jing, L., Chunjiang, B., Yuqiu, S. ahind Ruili, W. (2003). Experimental study on effect of paper-mulching rice planting technology on saving water and controlling weeds. *Transactions of the Chinese Society of Agricultural Engineering.* 6:014.
- Xuan, T. D., Tsuzuki, E., Terao, H., Matsuo, M., Khanh, T. D., Murayama, S., Hong and N. H. (2003). Alfalfa, rice by-products and their incorporation for weed control in rice. *Weed Bio. Manag.* 3:137-144.
- Yadav, S., Gill, M. S. and Kukal, S. S. (2007). Performance of direct-seeded basmati rice in loamy sand in semi-arid subtropical India. *Soil Till. Rese.* 97:229-238.
- Zhao, D., Atlin, G., Bastiaans, L. and Spiertz, J. (2006). Developing selection protocols for weed competitiveness in aerobic rice. *Field Crops Rese.* 97: 272-285.